

On track with Lean Manufacturing

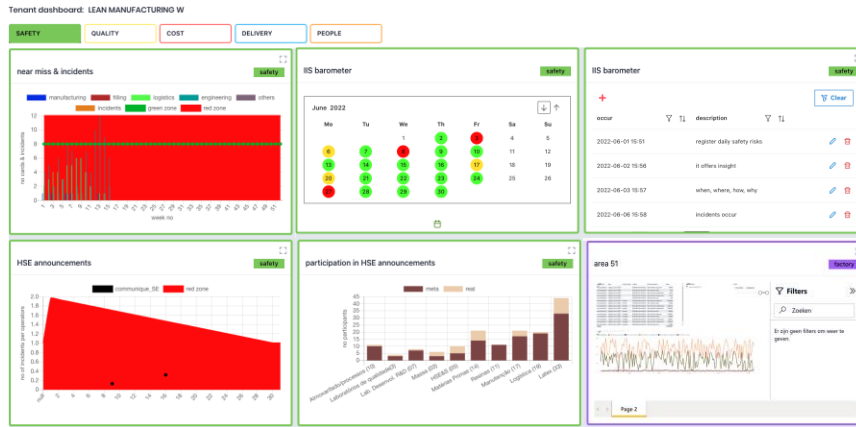
A visible process to fast moving leadership

Discover our SaaS application



Daily operations management

- Systemize
- Decrease Wastes
- Losses
- Stock
- Actions
- Problems
- Optimize Time



Strategy execution

- Tiers
- Frequencies
- Identify
- Performance
- Tendencies
- Visualize
- Understand
- Respond
- Improve

- ✓ Cloud-based daily shop floor management with iframe integrations
- ✓ Paperless, intuitive and easy setup
- ✓ Color palettes to highlight setbacks or thresholds
- ✓ Data schemas for effective, efficient huddles
- ✓ Calendar wise events for increased team interaction
- ✓ Templates to reduce work and guard brand, model and focus

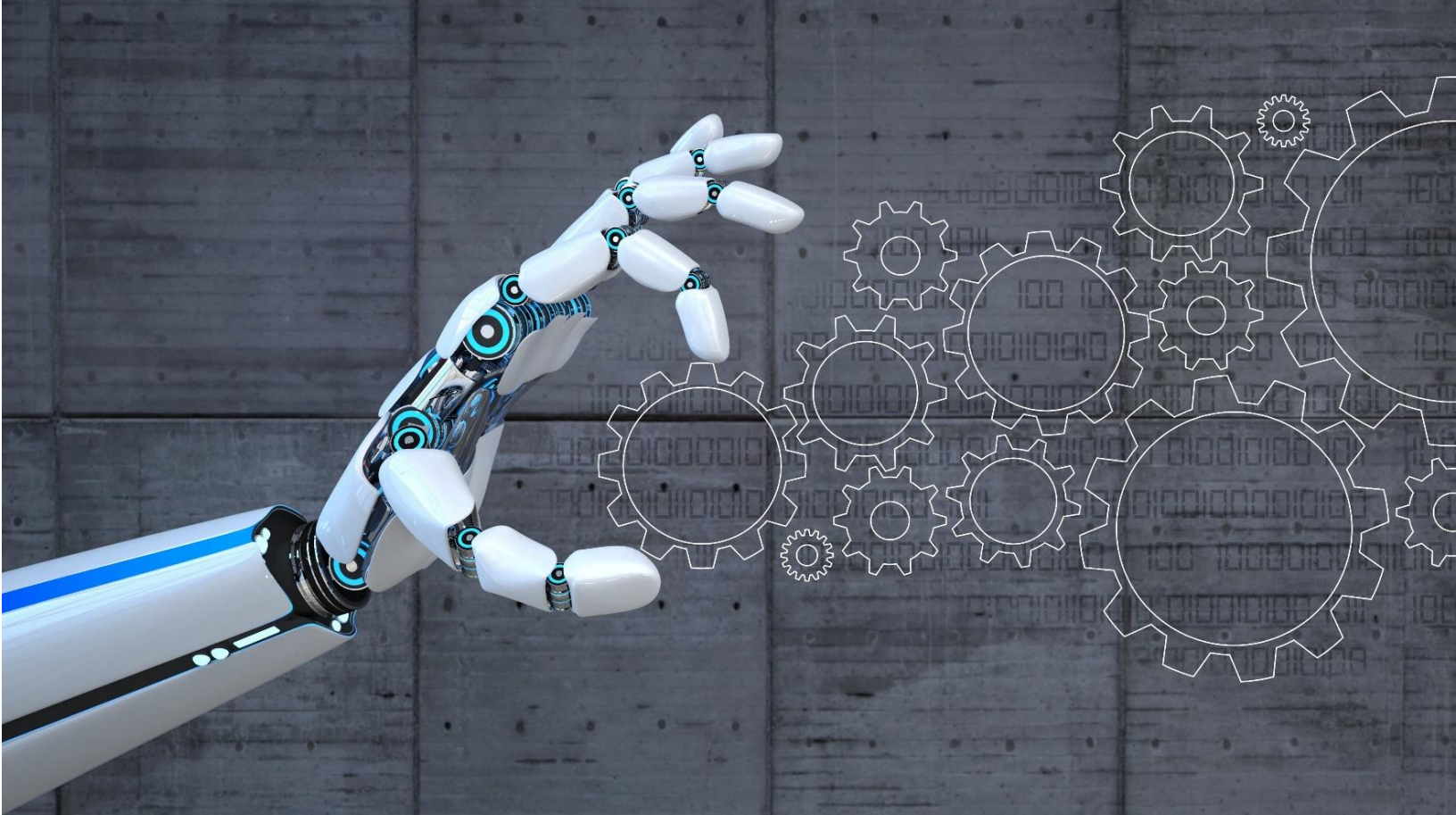


We help manufacturing companies, machine and industrial equipment builders to gain insights into their machine and productivity data, improve operational efficiency and offer data driven services by leveraging Industrial IoT solutions based on MS Azure

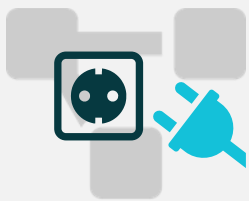
Contact us

Frankrijkstraat 11 K5
9140 Temse (Belgium)

www.inimco.com
we@inimco.com
+32 78 35 35 51



SHARE, VISUALIZE, ANALYZE ...



intuitive & business oriented

Using a digital lean board is as easy as using a whiteboard. Sign up or sign in on a web browser.

Choose colors, categories and labels.

Combine visualizations to create the perfect board.

The platform is designed to create templates for continuous improvement, consider content and sort depending on the tiers of the daily management.

Customized categories let you analyze your data from different perspectives.

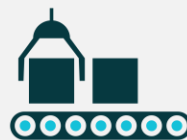


centralized & remote

The service is cloud based. Use nearly real time data, migrated from any device to run efficient meetings, whether you want to visualize your daily huddles or the PDCA cycle and deeper root cause analysis, avoid overlap by defining the tables in the templates.

No matter where you are, in the office or on your Gemba walk, track your statuses at a glance.

Allow your team members access to all relevant centralized information, even when they are not on the same location.



multi-factory standards

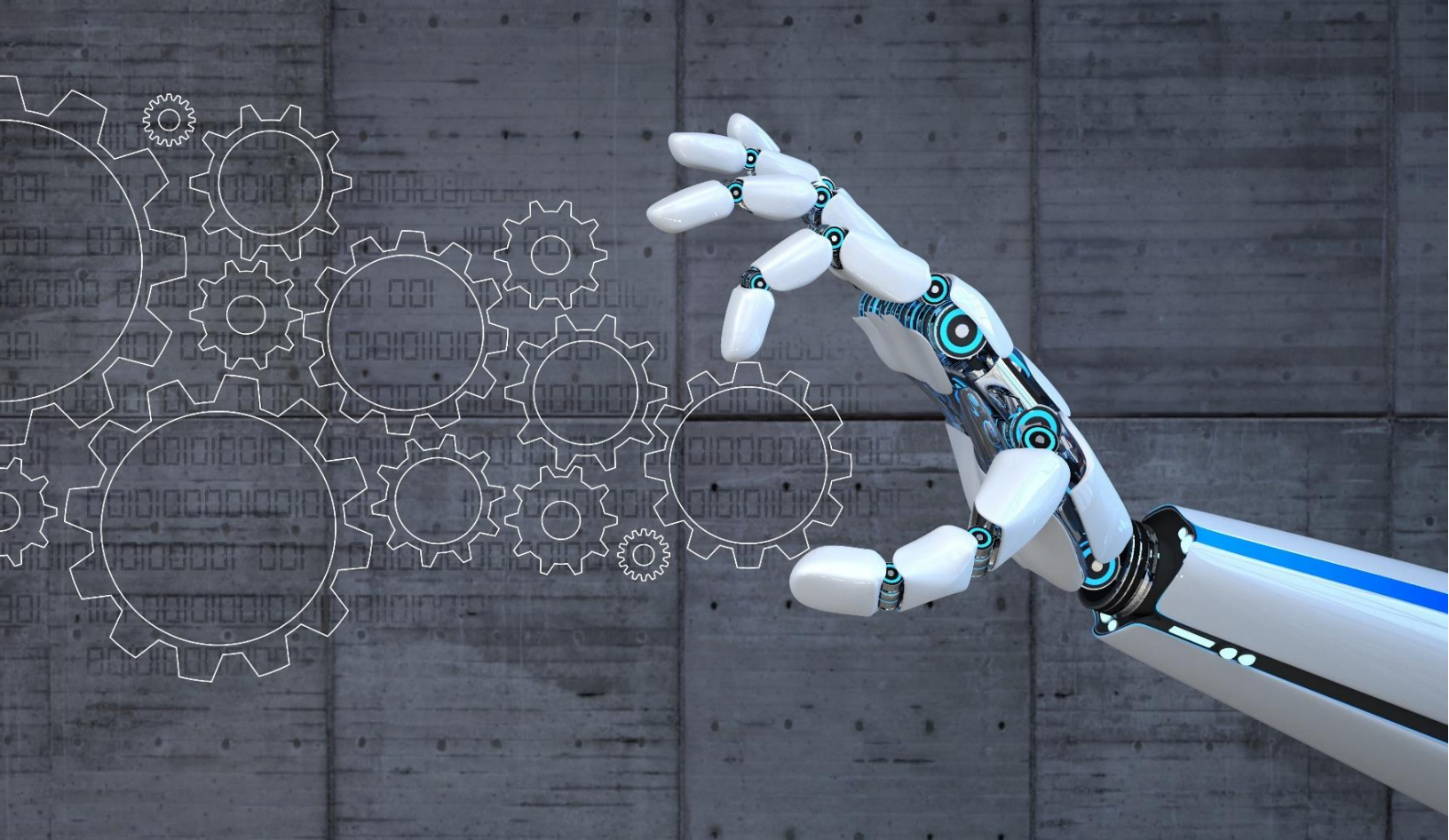
Based upon templates being created to stand out for your business, you are just one step away from applying them to other, possibly less performing divisions.



visual management

Highlight key figures & KPI's to visualize how your business performs, let your employees see current status, history and future targets in charts.

increase employee engagement and safety awareness to create a natural collaboration flow, share info with pictures to eliminate security risks in the future, analyze results, tests, tasks and roles.



... ALIGN, EXECUTE & LEVERAGE



takt, cycle, lead

Define the best time to process and deliver. Define the process rhythm. Specify added value, identify its flow



time saving templates

Run efficient meetings with well-structured boards. A template aligned with the needs of the specific team is key to efficiency. Avoid overlap and unnecessary info.

Create a flow from left top to right bottom corner to settle a routine and speed up the agenda.



continuous improvement

Increase efficiency by reducing waste, improving daily operations and combining experiences. There for, focusing on continuous improvement, every process is the beginning of a new cycle to execute, check & react. Plan improvements and benchmark goals.



integration apps

Discuss & analyze OneDrive library documents through Microsoft 365 documents or make powerful decisions based upon Power Bi storyboards and visualize a PowerPoint presentation to tell a persuasive story.



Discover our SaaS application

Get started for € / month

About Inimco

Inimco is a Belgium-based Microsoft Gold partner with focus on Industrial Internet Of Things solutions on Microsoft Azure for machine data insights and production performance improvement. Our customers are manufacturing companies, machine and industrial equipment builders who want to avoid the complexity of starting from scratch and have a fast ROI.

Contact us

Hoogkamerstraat 304
9140 Temse (Belgium)

www.inimco.com
we@inimco.com
+32 78 35 35 51